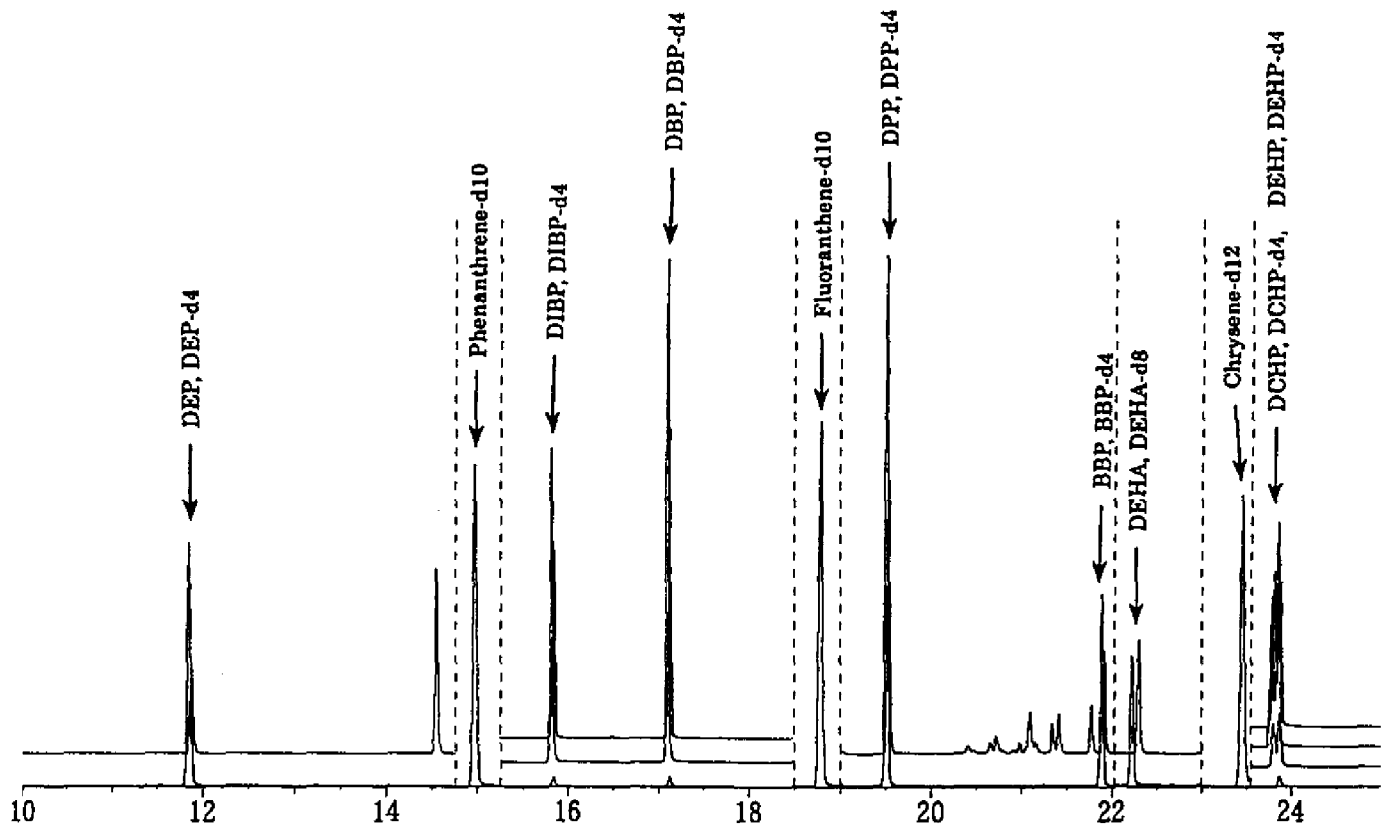


Table 6 Phthalates and adipate in human sera

Sample	Sex	Blank	DEP, ppb (DEP-d4, %)	DIBP, ppb (DIBP-d4, %)	DBP, ppb (DBP-d4, %)	DPP, ppb (DPP-d4, %)	BBP, ppb (BBP-d4, %)	DEHA, ppb (DEHA-d8, %)	DCHP, ppb (DCHP-d4, %)	DEHP, ppb (DEHP-d4, %)
1	M	A	ND 15%	ND 59%	ND 53%	ND 71%	ND 39%	ND 48%	ND 73%	ND 49%
		A	ND 15%	ND 55%	ND 57%	ND 73%	ND 40%	ND 52%	ND 77%	ND 51%
2	M	B	ND 15%	ND 61%	ND 50%	ND 72%	ND 42%	ND 53%	ND 81%	ND 55%
		B	ND 16%	ND 63%	ND 57%	ND 75%	ND 47%	ND 71%	ND 83%	ND 71%
3	M	A	ND 16%	ND 63%	1.1 54%	ND 70%	ND 41%	ND 36%	ND 73%	ND 37%
		A	ND 15%	ND 62%	ND 55%	ND 72%	ND 40%	ND 43%	ND 74%	ND 44%
4	F	A	ND 15%	ND 60%	ND 53%	ND 70%	ND 38%	ND 46%	ND 70%	ND 46%
		A	ND 15%	ND 60%	ND 53%	ND 70%	ND 40%	ND 48%	ND 74%	ND 47%
5	F	A	ND 13%	ND 54%	1.3 49%	ND 73%	ND 36%	ND 51%	ND 75%	ND 51%
		A	ND 13%	ND 55%	1.4 42%	ND 67%	ND 31%	ND 44%	ND 71%	ND 45%
6	F	B	ND 17%	ND 66%	ND 49%	ND 72%	ND 43%	ND 49%	ND 82%	ND 52%
		B	ND 17%	ND 64%	ND 47%	ND 69%	ND 41%	ND 47%	ND 81%	ND 51%
7	F	B	ND 14%	ND 58%	1.7 46%	ND 67%	ND 35%	ND 53%	ND 74%	ND 51%
Blank A			ND 18%	ND 74%	0.7 75%	ND 87%	ND 47%	ND 82%	ND 69%	0.4 81%
Blank B			ND 18%	ND 74%	2.4 75%	ND 87%	ND 47%	ND 82%	ND 69%	0.6 81%

M, Male; F, Female



検出番号 : 1 SIM = 3280000  
149.10 153.10

検出番号 : 2 SIM = 3280000  
188.20

検出番号 : 3 SIM = 3280000  
149.10 153.10 223.10

検出番号 : 4 SIM = 3280000  
212.20

検出番号 : 5 SIM = 3280000  
149.10 153.10

検出番号 : 6 SIM = 3280000  
129.20 137.20

検出番号 : 7 SIM = 3280000  
240.25

検出番号 : 8 SIM = 3280000  
149.10 153.10 167.10 279.20

Fig. 1-1 Chromatogram of phthalates and adipate  
Phthalate and adipate; 50 ng/ml

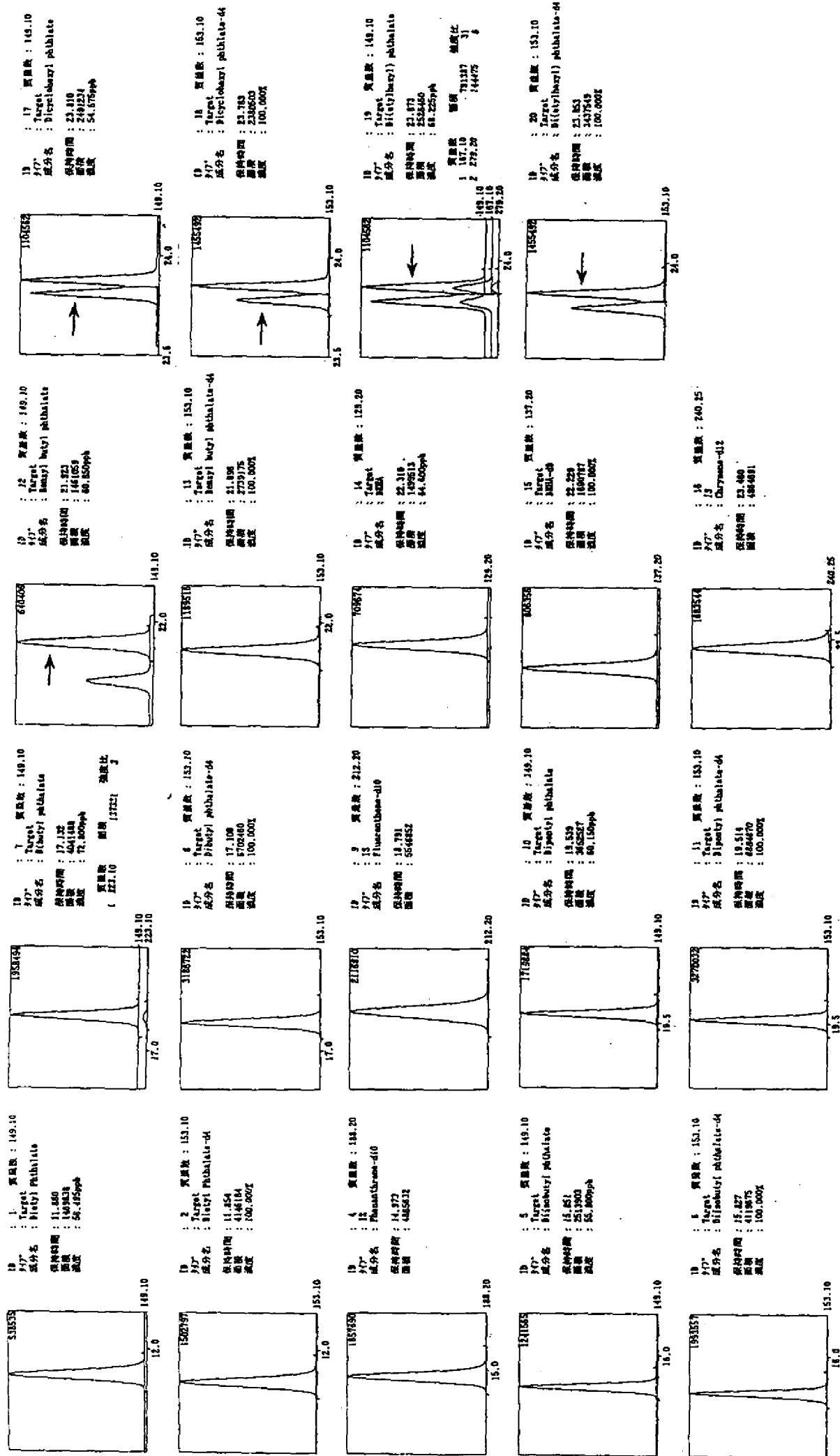


Fig. 1-2 Chromatogram of phthalates and adipate Phthalate and adipate; 50 ng/ml

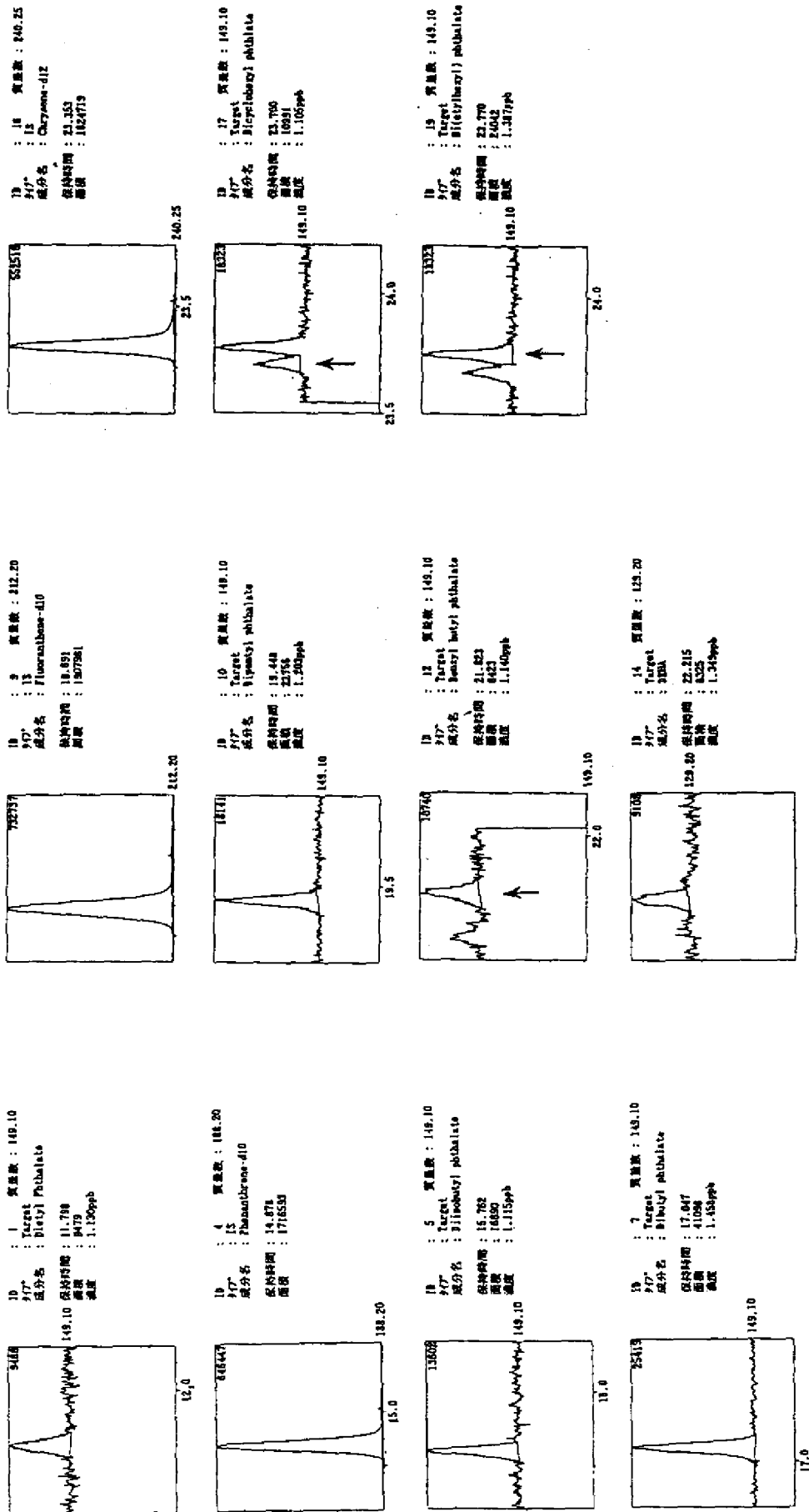


Fig. 1-3 Chromatogram of phthalates and adipate  
Phthalate and adipate; 1 ng/ml

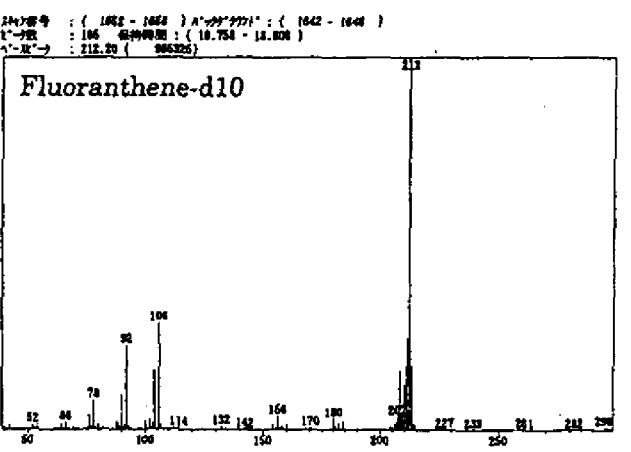
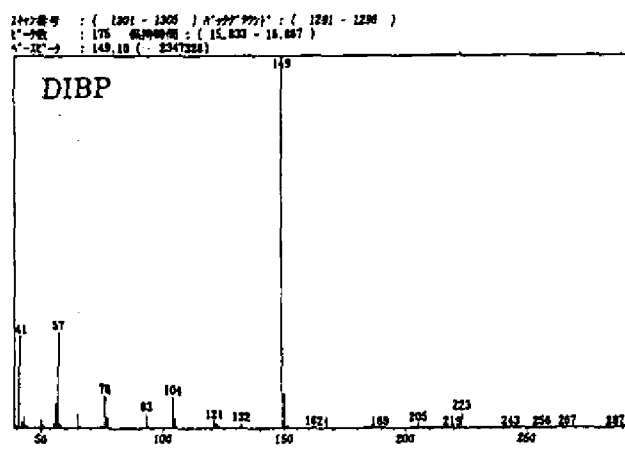
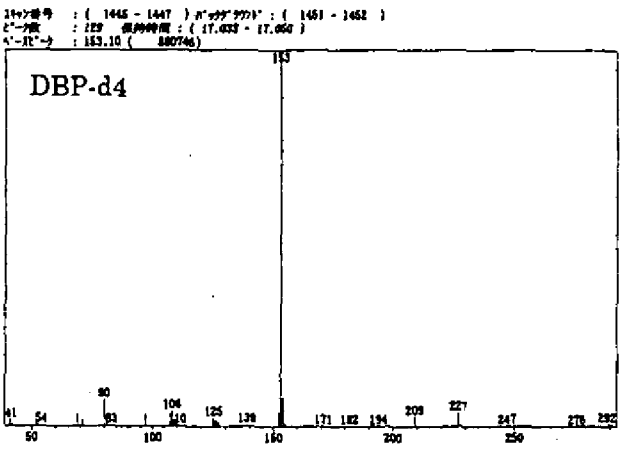
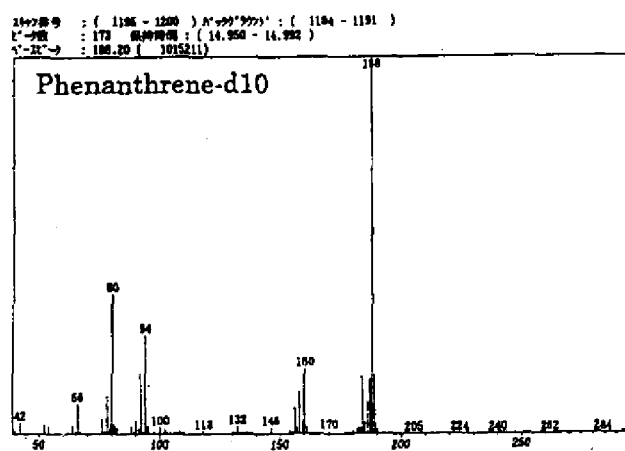
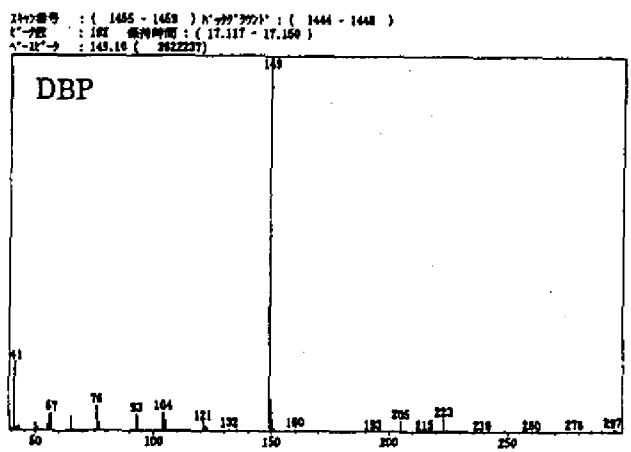
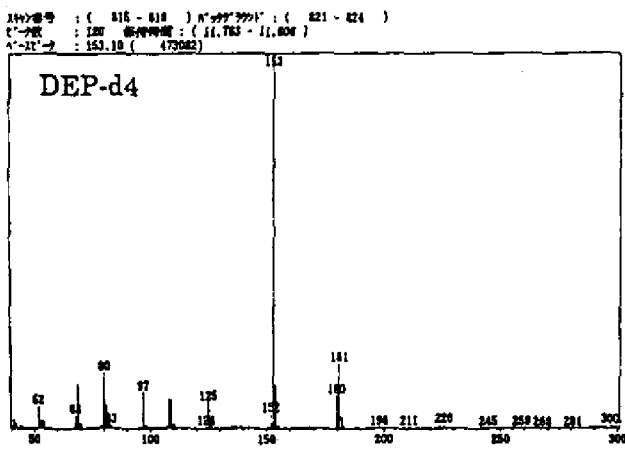
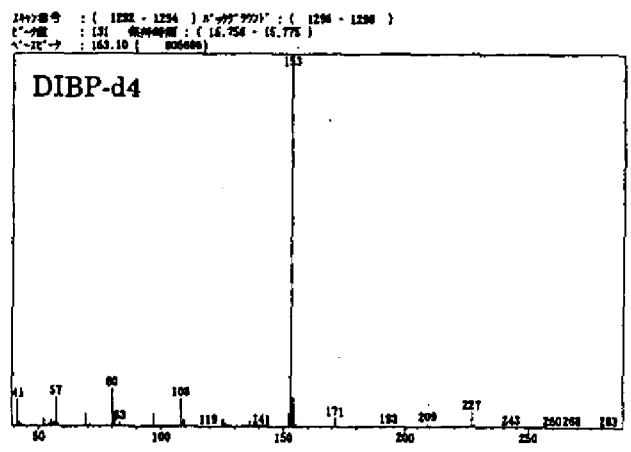
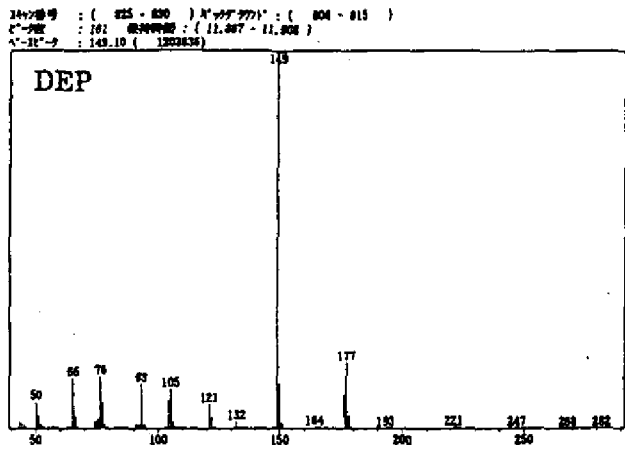


Fig. 2-1 Mass spectra of phthalates, adipate and their surrogate compounds

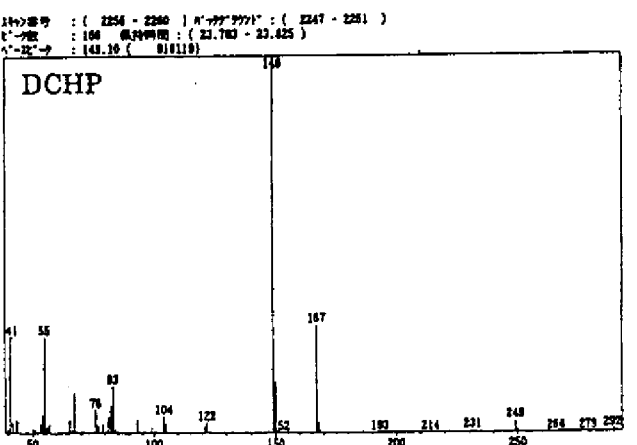
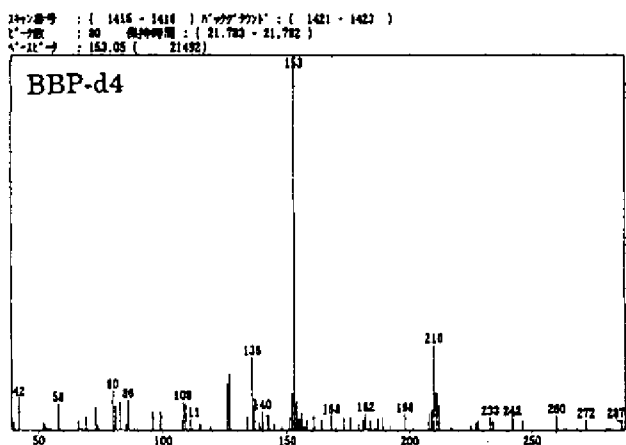
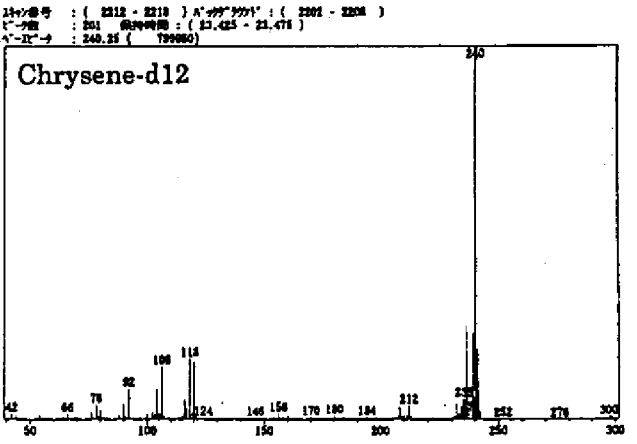
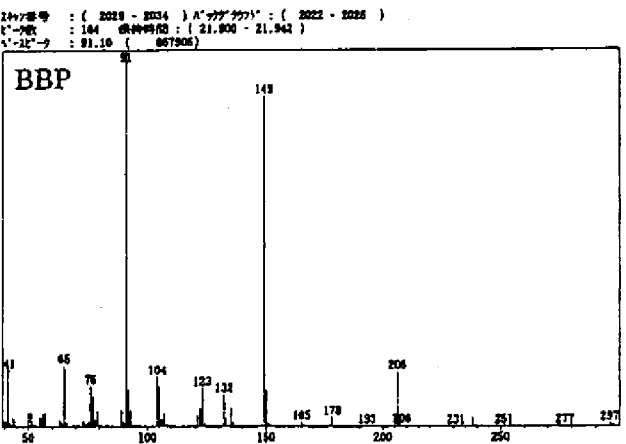
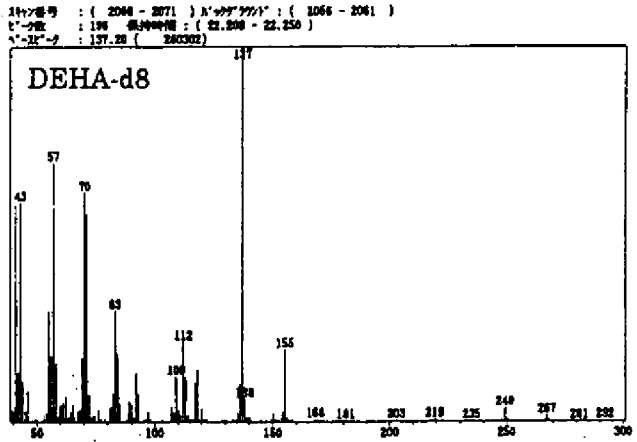
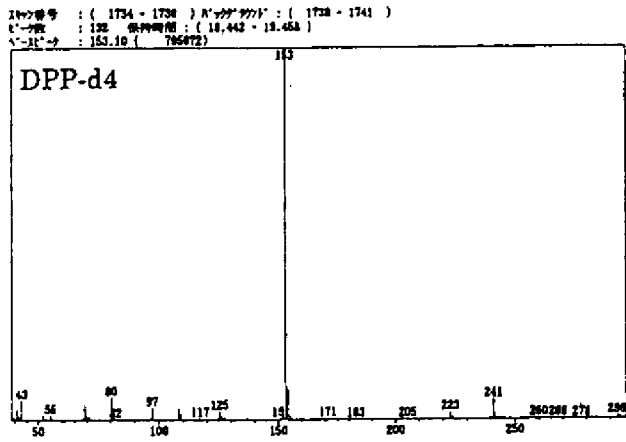
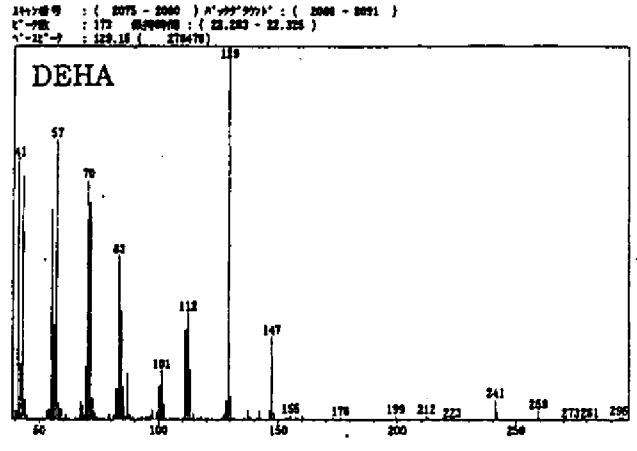
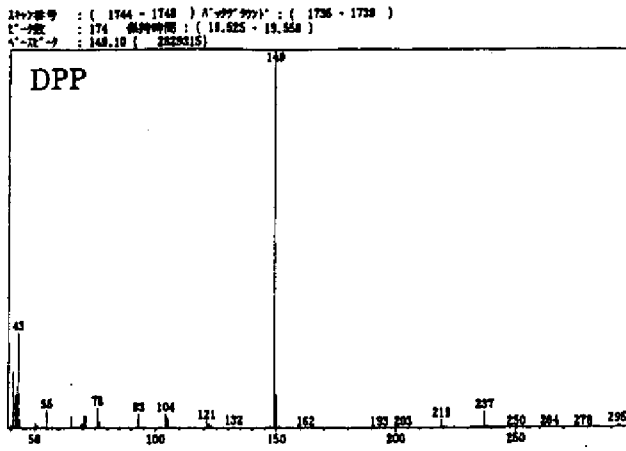


Fig. 2-2 Mass spectra of phthalates, adipate and their surrogate compounds

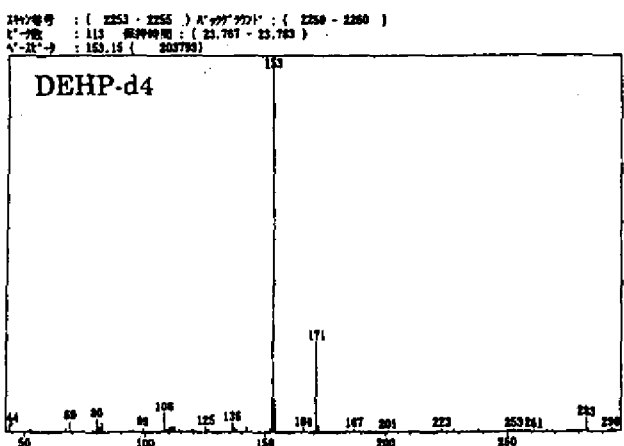
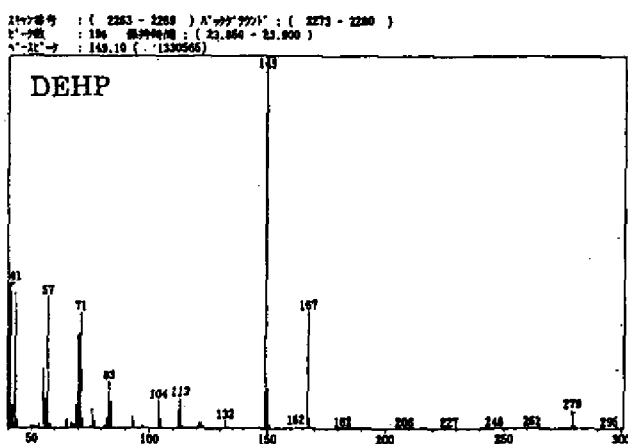
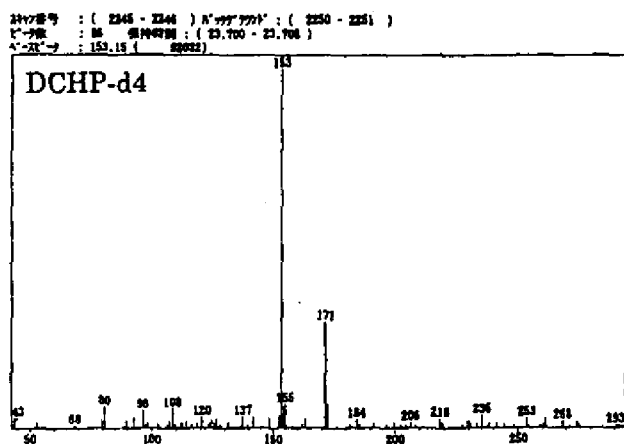
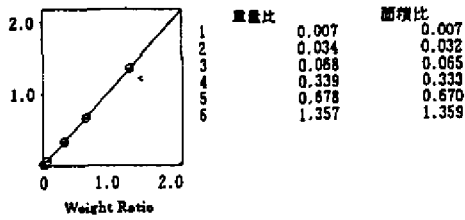
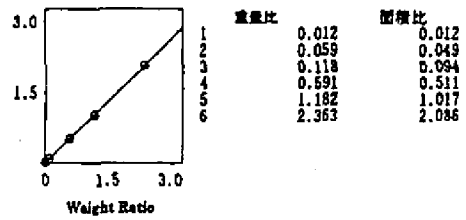


Fig. 2-3 Mass spectra of phthalates, adipate and their surrogate compounds

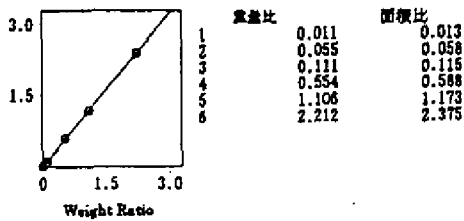
ID # 1 質量数: 149.10 成分名: Diethyl Phthalate  
 面積比 = 1.00096 \* 重量比 + -0.00298203 寄与率 = 0.999947  
 Area Ratio



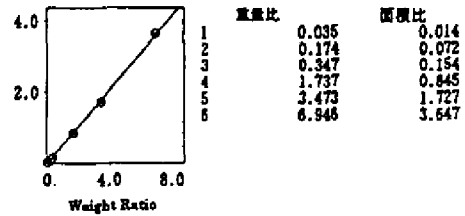
ID # 12 質量数: 149.10 成分名: Benzyl butyl phthalate  
 面積比 = 0.881662 \* 重量比 + -0.00739012 寄与率 = 0.999842  
 Area Ratio



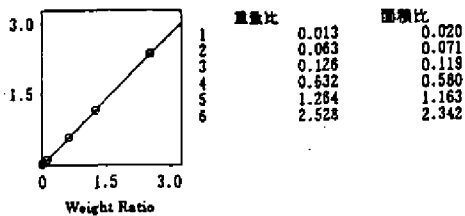
ID # 5 質量数: 149.10 成分名: Diisobutyl phthalate  
 面積比 = 1.07287 \* 重量比 + -0.00376325 寄与率 = 0.999962  
 Area Ratio



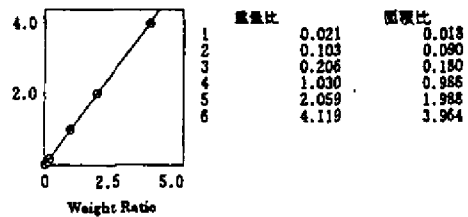
ID # 14 質量数: 129.20 成分名: DEEA  
 面積比 = 0.524814 \* 重量比 + -0.0354397 寄与率 = 0.999284  
 Area Ratio



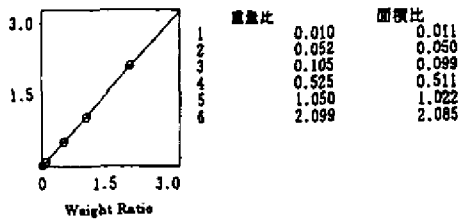
ID # 7 質量数: 149.10 成分名: Dibutyl phthalate  
 面積比 = 0.922537 \* 重量比 + 0.0045954 寄与率 = 0.999944  
 Area Ratio



ID # 17 質量数: 149.10 成分名: Dicyclohexyl phthalate  
 面積比 = 0.96536 \* 重量比 + -0.00843758 寄与率 = 0.999980  
 Area Ratio



ID # 10 質量数: 149.10 成分名: Dipentyl phthalate  
 面積比 = 0.992053 \* 重量比 + -0.00536415 寄与率 = 0.999906  
 Area Ratio



ID # 19 質量数: 149.10 成分名: Di(stylohexyl) phthalate  
 面積比 = 1.06891 \* 重量比 + 0.0019112 寄与率 = 0.999834  
 Area Ratio

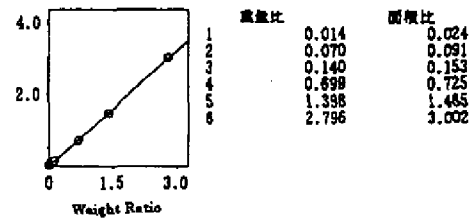
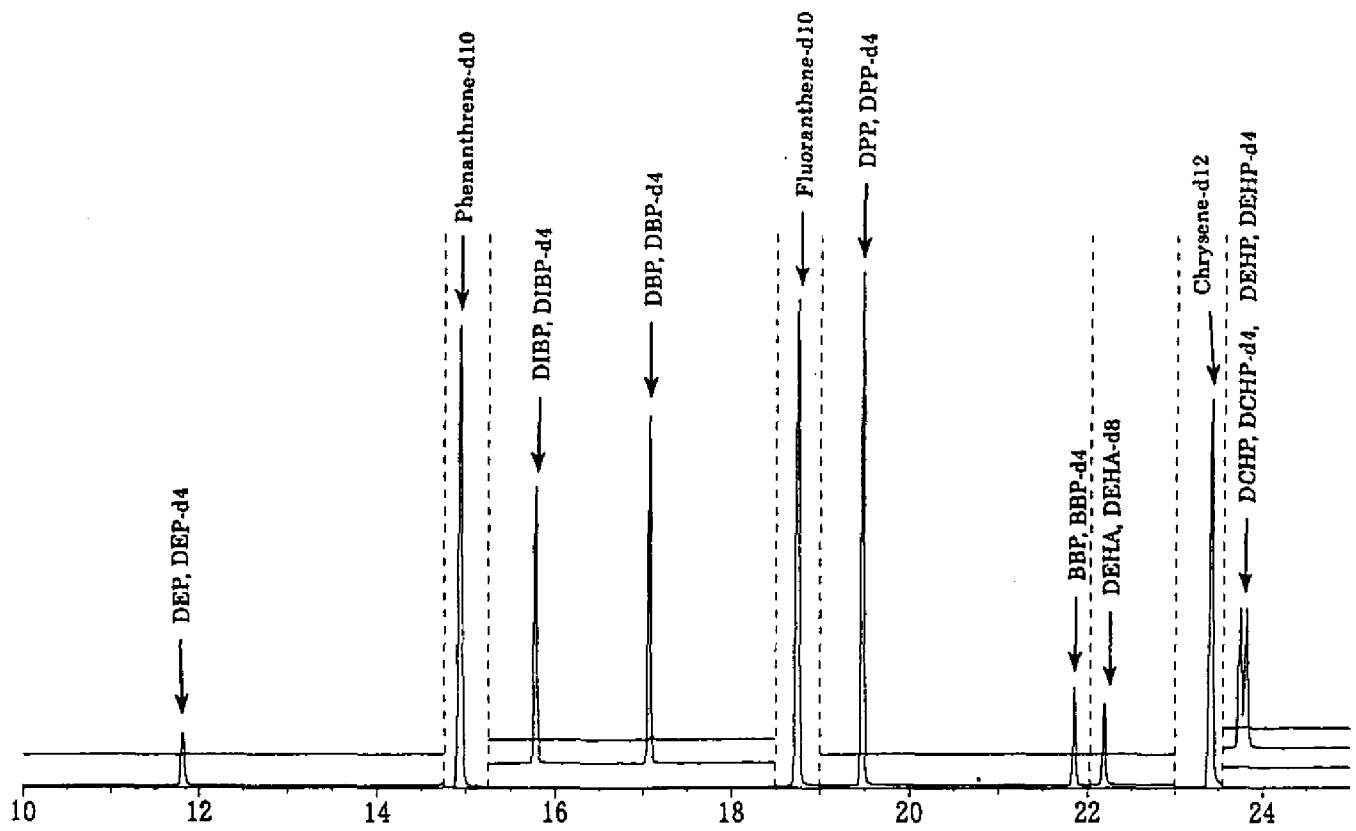


Fig. 3 Calibration curves of phthalates and adipate





- イセット番号 : 1 SIM = 1620000  
149.10 153.10
- イセット番号 : 2 SIM = 1620000  
188.20
- イセット番号 : 3 SIM = 1620000  
149.10 153.10 223.10
- イセット番号 : 4 SIM = 1620000  
212.20
- イセット番号 : 5 SIM = 1620000  
149.10 153.10
- イセット番号 : 6 SIM = 1620000  
129.20 137.20
- イセット番号 : 7 SIM = 1620000  
240.25
- イセット番号 : 8 SIM = 1620000  
149.10 153.10 167.10 279.20

Fig. 4-1 Chromatogram obtained with human serum

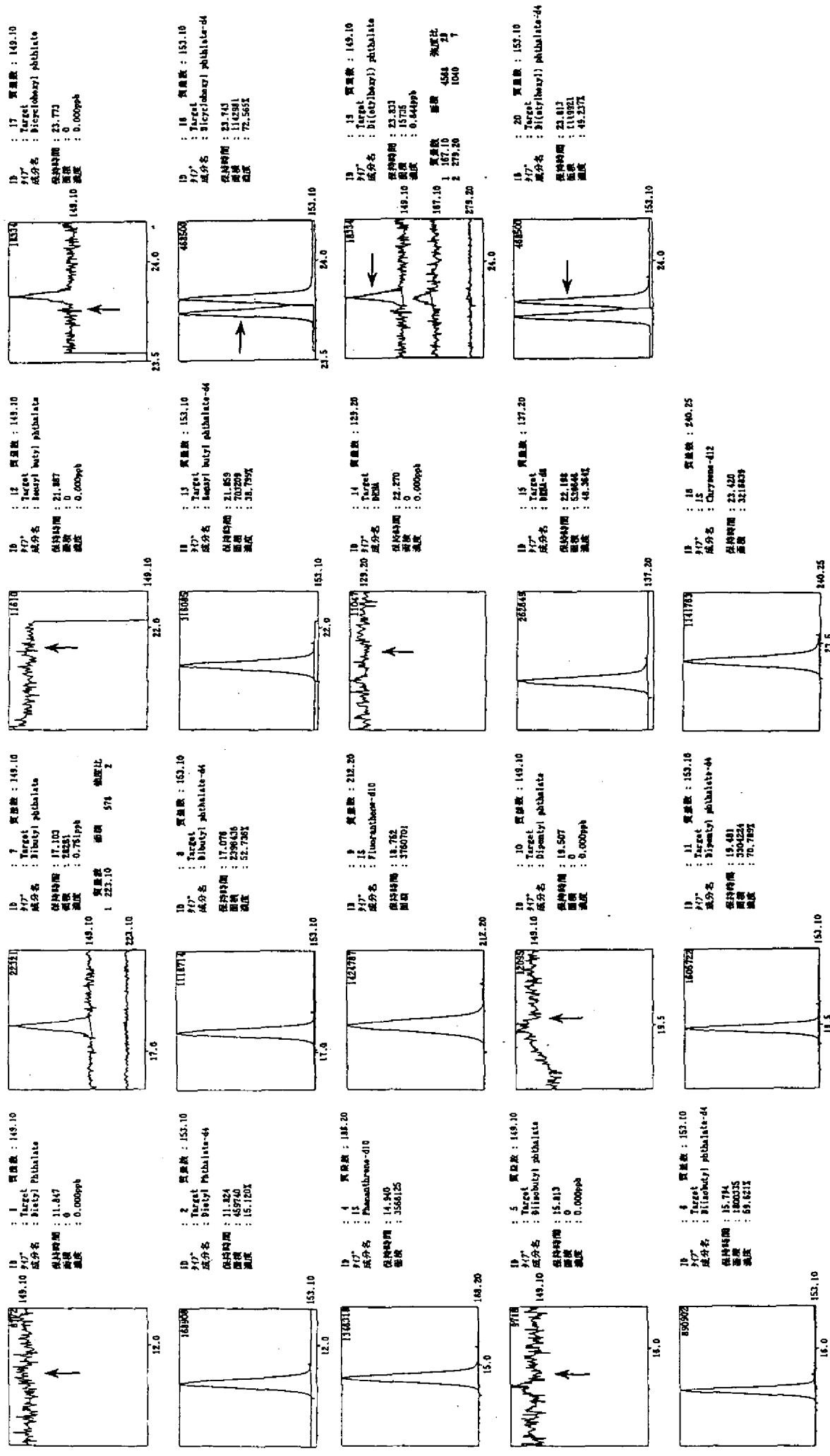


Fig. 4-2 Chromatogram obtained with human serum