

## Table 1 Analytical conditions for HPLC

---

Pump : NANOSPACE SI-1 (SHISEIDO)

Column : J'sphere ODS-H80 (YMC, 4.6mm i.d. x 150mm)

Detector : UV

Wavelength : 230 or 202nm

Mobile phase : Methanol / Water (8:2 v/v)

Flow rate : 1.0mL/min

Injection volume : 10 $\mu$ L/min

---

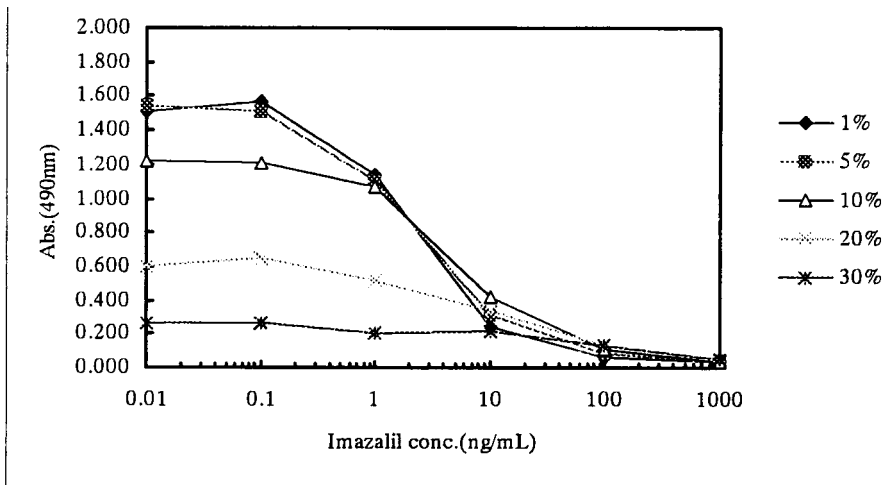


Fig. 1 Methanol tolerance test for anti-imazalil monoclonal antibody

**ELISA condition**

Immobilized conc. : 10 $\mu$ g/mL, Buffer : 10mM PBS (pH 7.2)

HRP conc. : 15.625ng/mL, Reaction : 1 hour, 25 $^{\circ}$ C

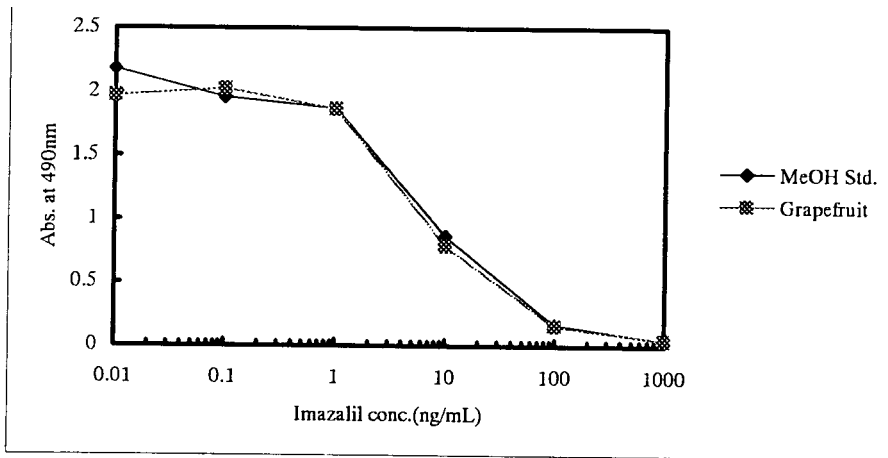


Fig. 2 Standard curve for imazalil with grapefruit extract  
ELISA conditions

Immobilized conc. : 10 $\mu$ g/mL, PBS : 10mM PBS (pH 7.2)

Methanol conc. : 5%, HRP : 15.625ng/mL

Reaction : 1 hour, 25 $^{\circ}$ C

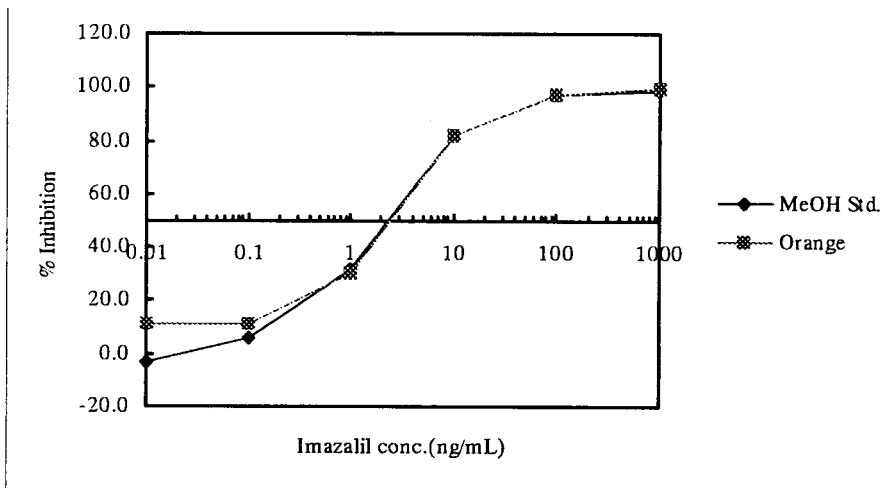


Fig. 3 Inhibition curve for imazalil with orange extract

ELISA condition

Immobilized conc. : 10 $\mu$ g/mL, Buffer : 10mM PBS (pH 7.2)

Methanol conc. : 5%, HRP conc. : 15.625ng/mL

Reaction : 1 hour, 25 $^{\circ}$ C

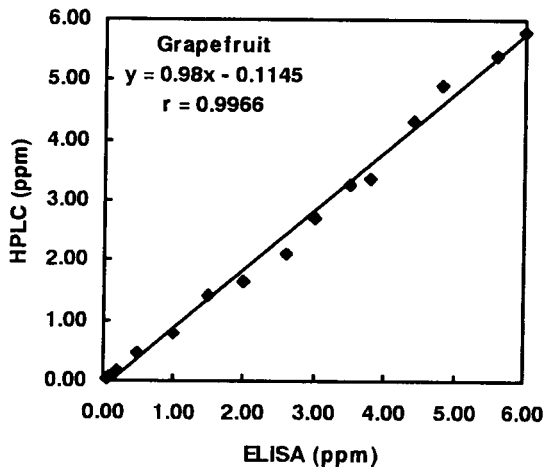
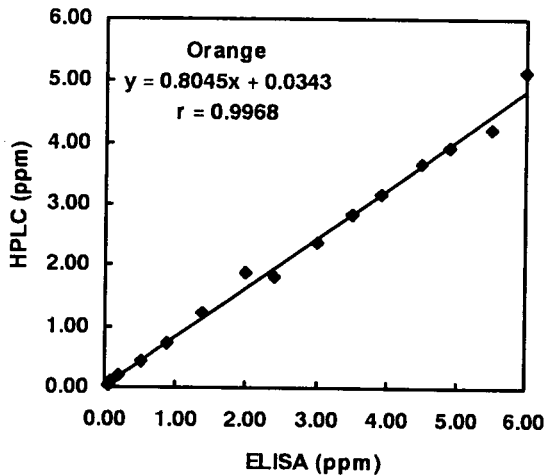
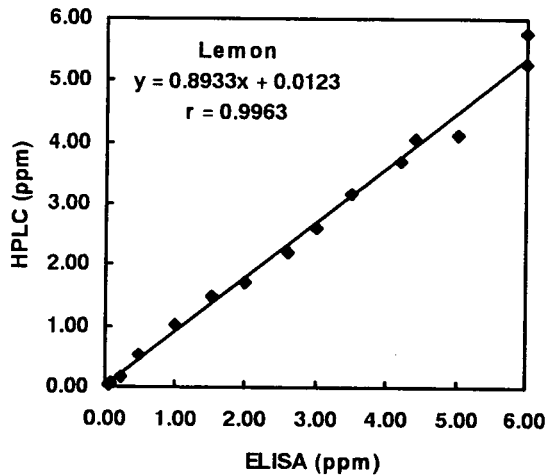


Fig. 4 Relationship between ELISA and HPLC