

Figure 9-a. Whole body autoradiographs of a rat on the 12th day of gestation 1.5 hr after oral administration of 4-n-Nonylphenol [ring- $^{14}\text{C}(\text{U})$] (Dose : 1.85MBq/200 $\mu\text{g}/\text{kg}$)

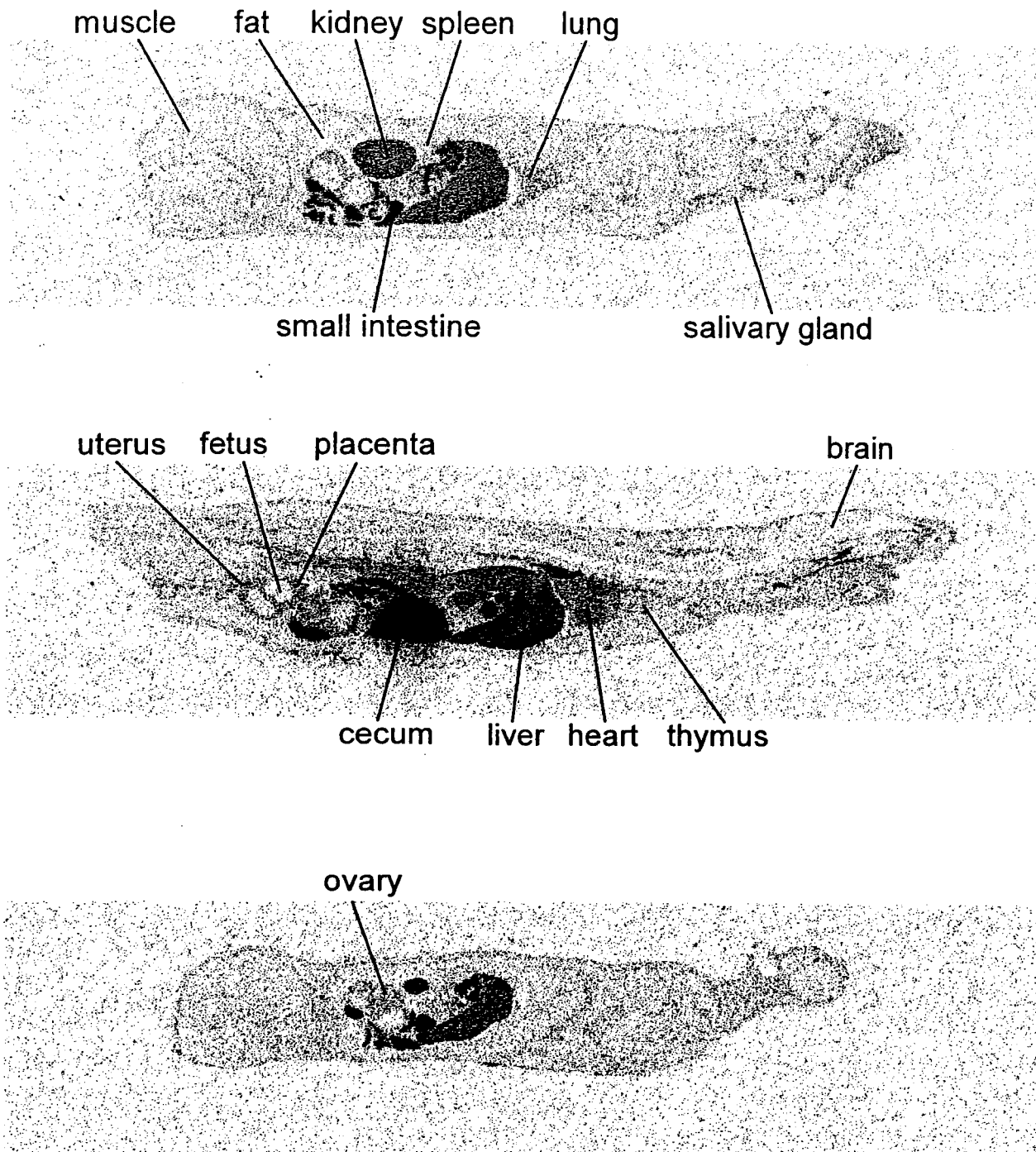


Figure 9-b. Whole body autoradiographs of a rat on the 12th day of gestation 6 hr after oral administration of 4-n-Nonylphenol [ring- ^{14}C (U)] (Dose : 1.85MBq/200 μg /kg)

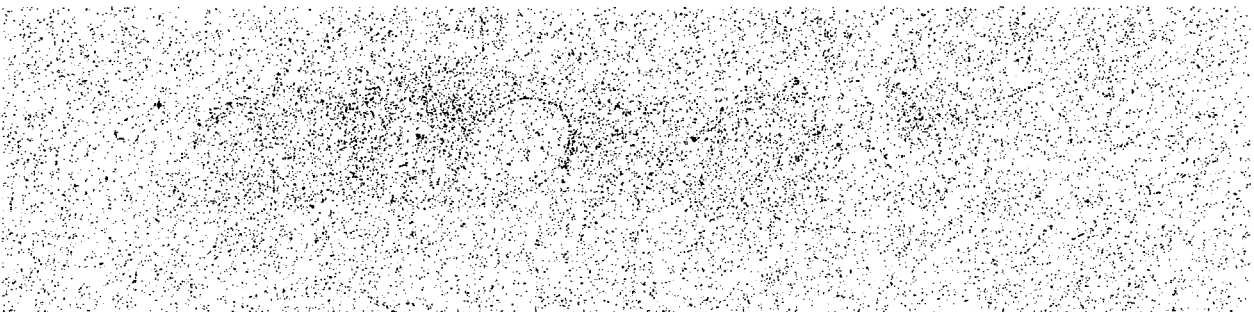
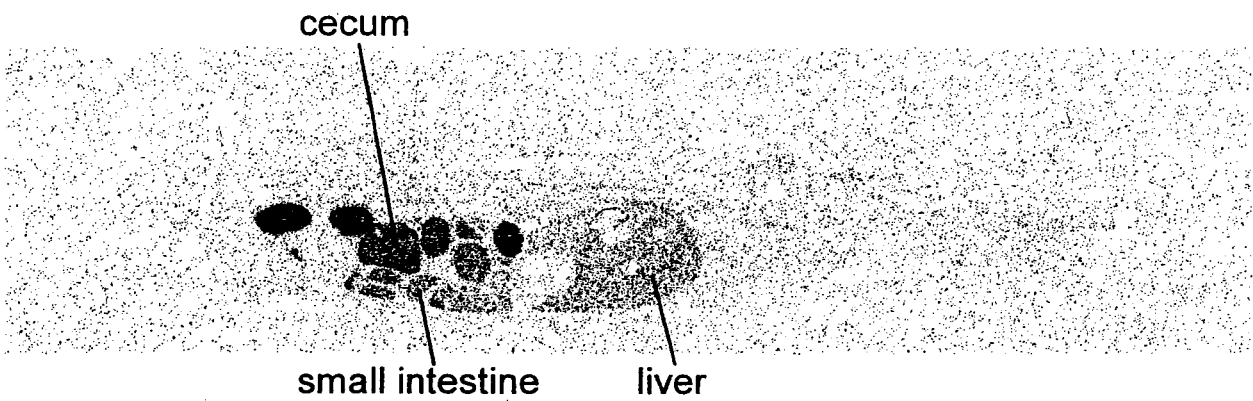
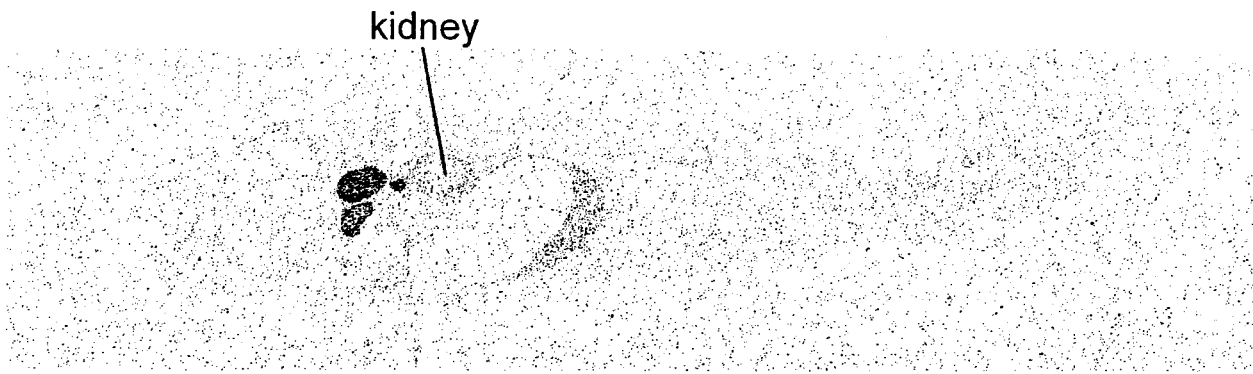


Figure 9-c. Whole body autoradiographs of a rat on the 12th day of gestation 24 hr after oral administration of 4-n-Nonylphenol [ring-¹⁴C(U)] (Dose : 1.85MBq/200 μ g/kg)

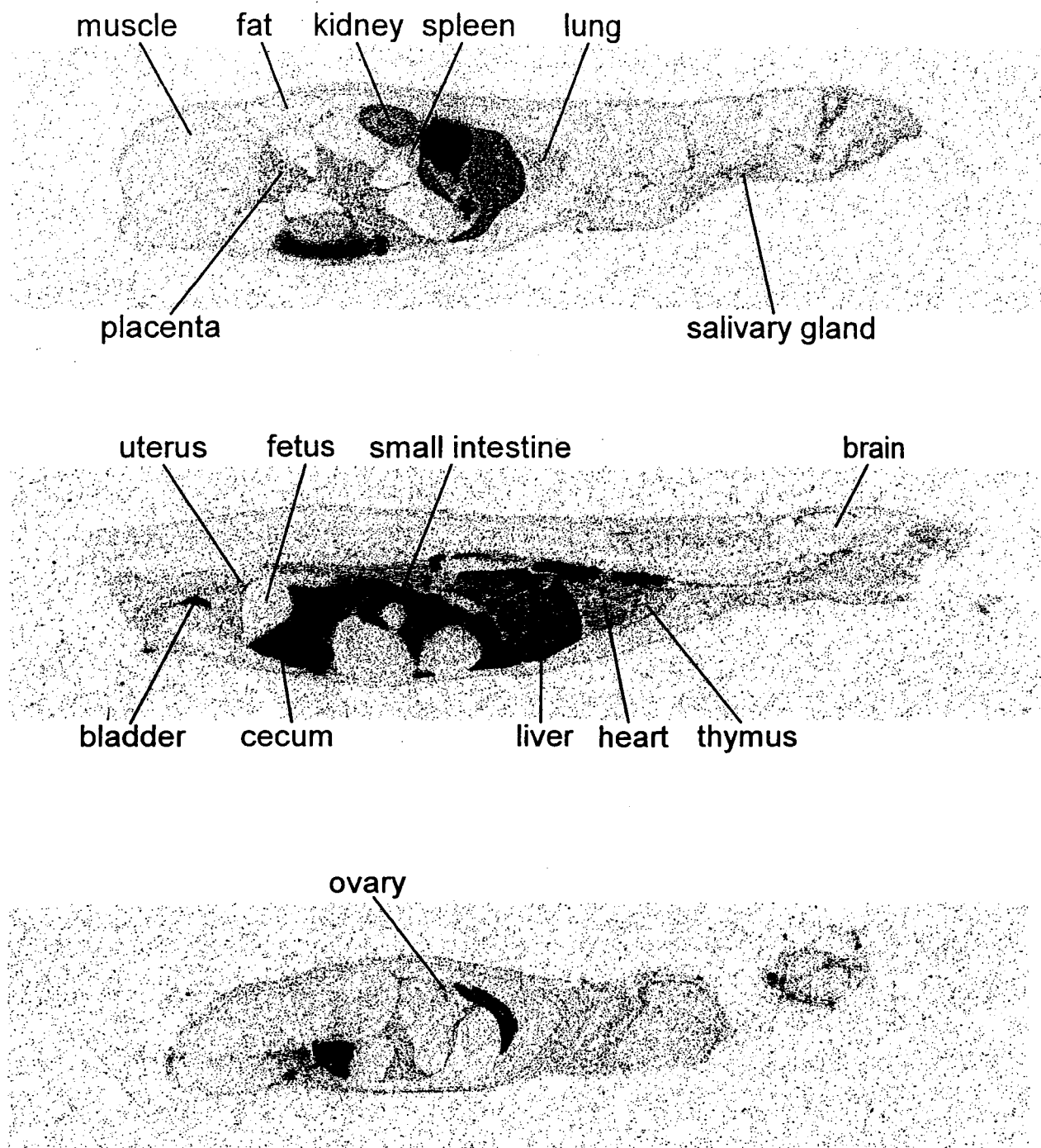


Figure 10-a. Whole body autoradiographs of a rat on the 18th day of gestation 1.5 hr after oral administration of 4-n-Nonylphenol [ring-¹⁴C(U)] (Dose : 1.85MBq/200 μ g/kg)

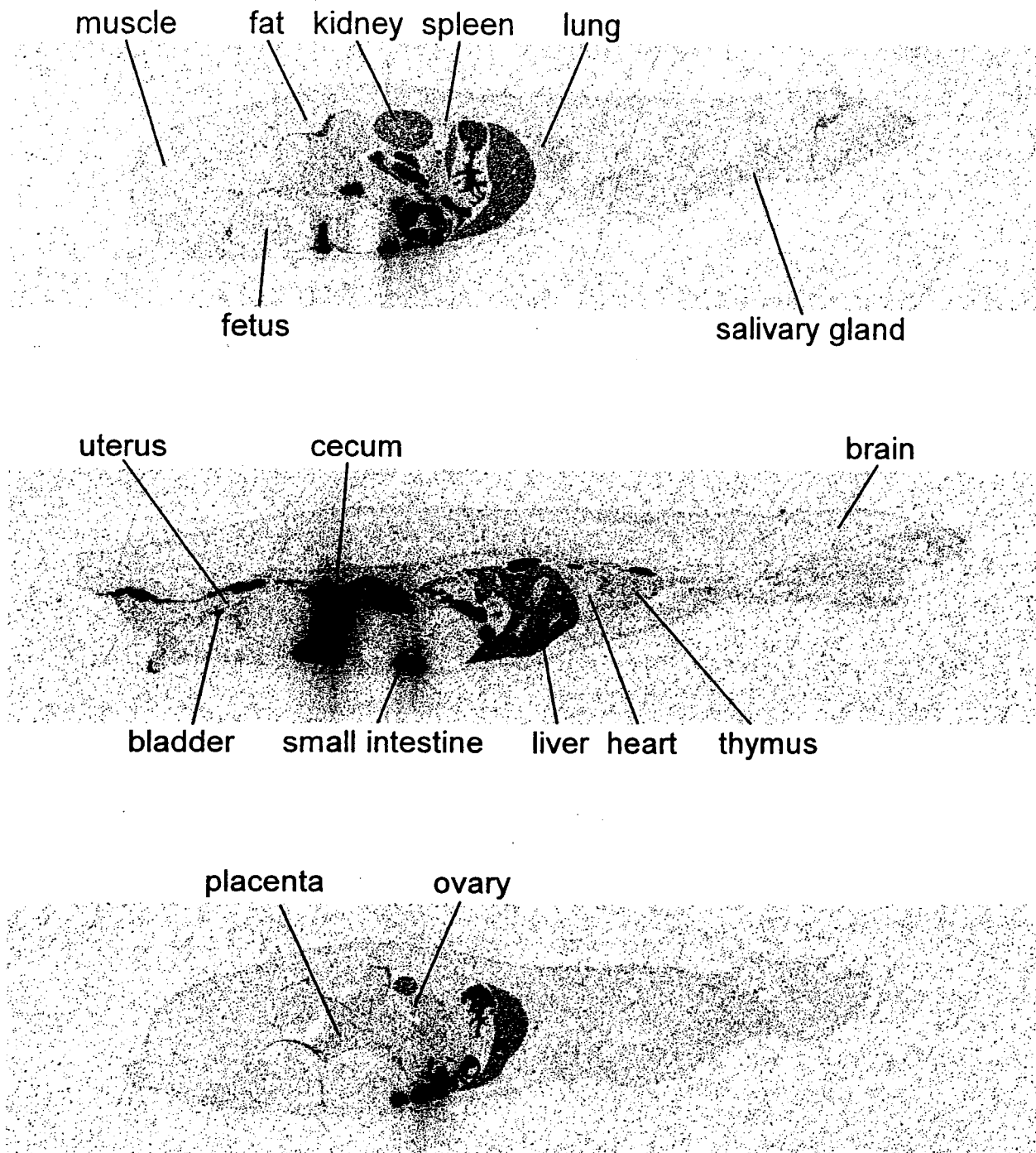


Figure 10-b. Whole body autoradiographs of a rat on the 18th day of gestation 6 hr after oral administration of 4-n-Nonylphenol [ring-¹⁴C(U)] (Dose : 1.85MBq/200 μ g/kg)

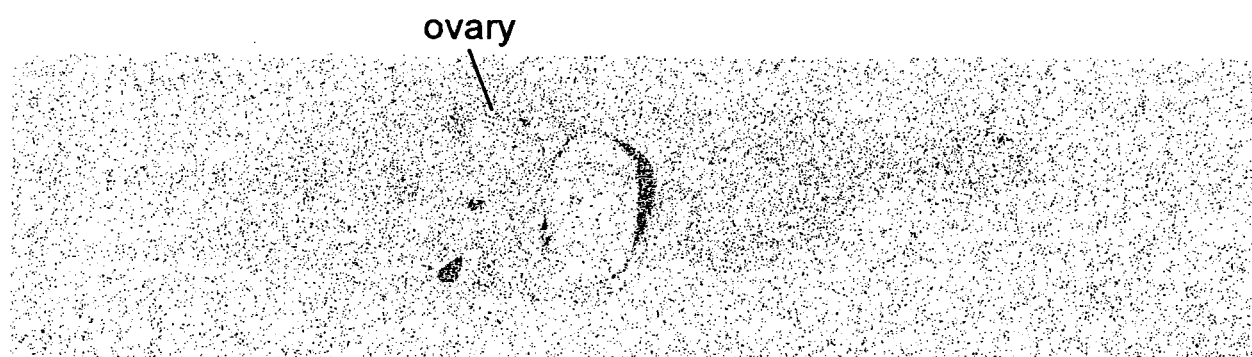
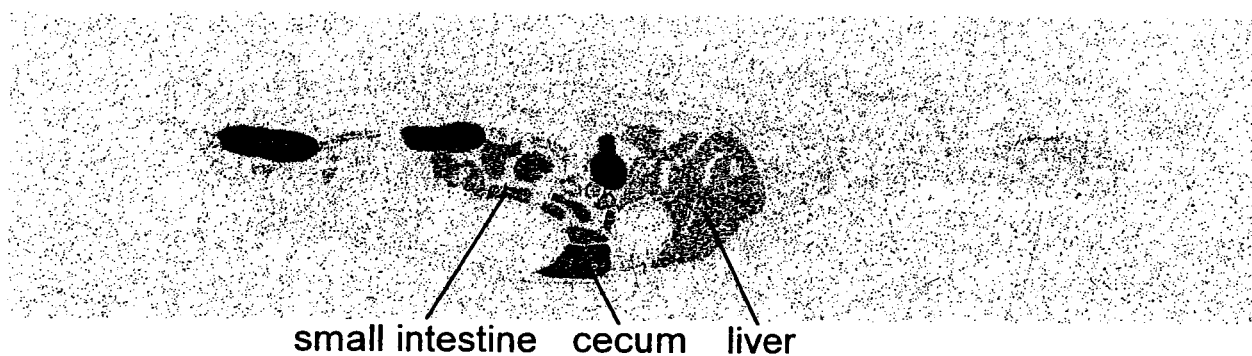
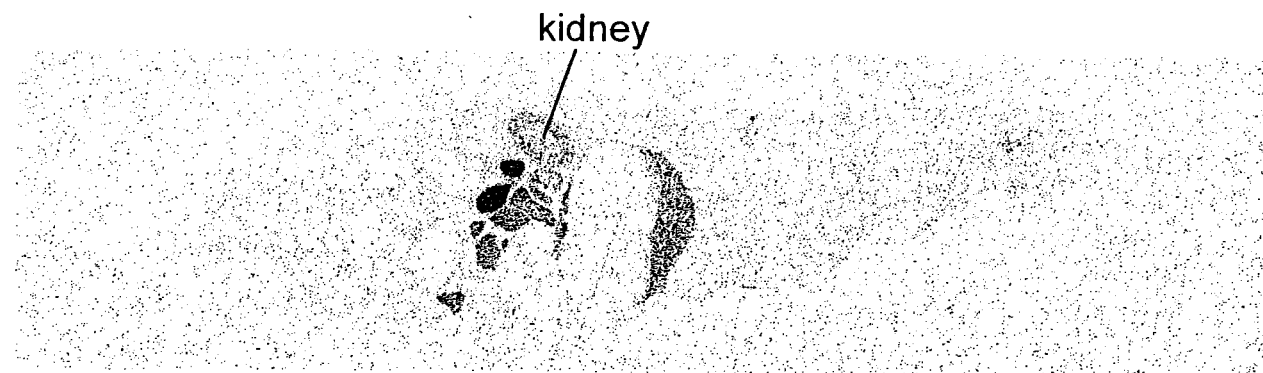


Figure 10-c. Whole body autoradiographs of a rat on the 18th day of gestation 24 hr after oral administration of 4-n-Nonylphenol [ring- ^{14}C (U)] (Dose : 1.85MBq/200 μg /kg)