

Figure 7-a. Whole body autoradiographs of a rat on the 12th day of gestation 2 hr after oral administration of Benzyl n-butyl phthalate [ring- ^{14}C (U)]
(Dose : 1.85MBq/250 μ g/kg)

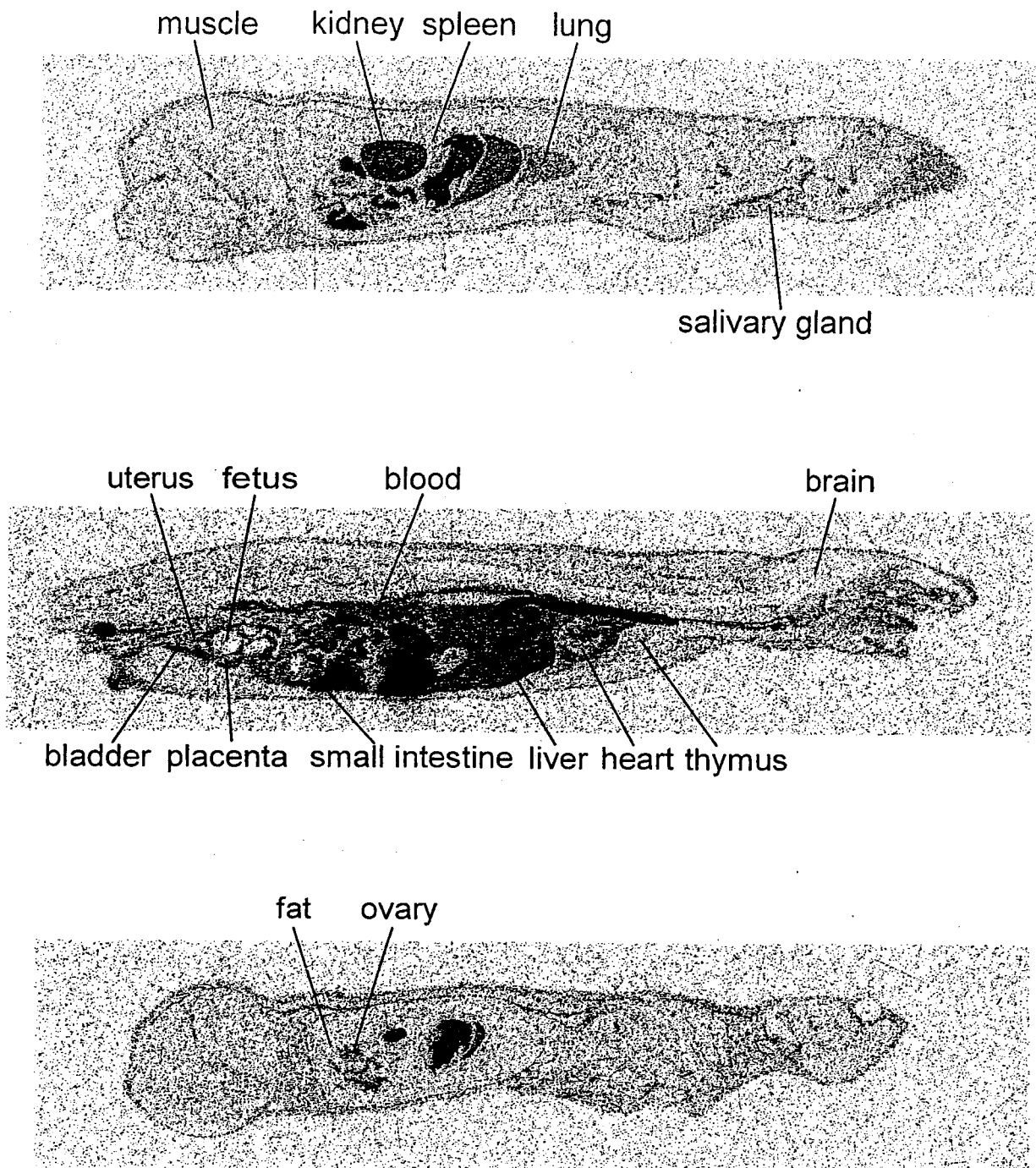


Figure 7-b. Whole body autoradiographs of a rat on the 12th day of gestation 6 hr after oral administration of Benzyl n-butyl phthalate [ring- $^{14}\text{C}(\text{U})$] (Dose : 1.85MBq/250 $\mu\text{g}/\text{kg}$)

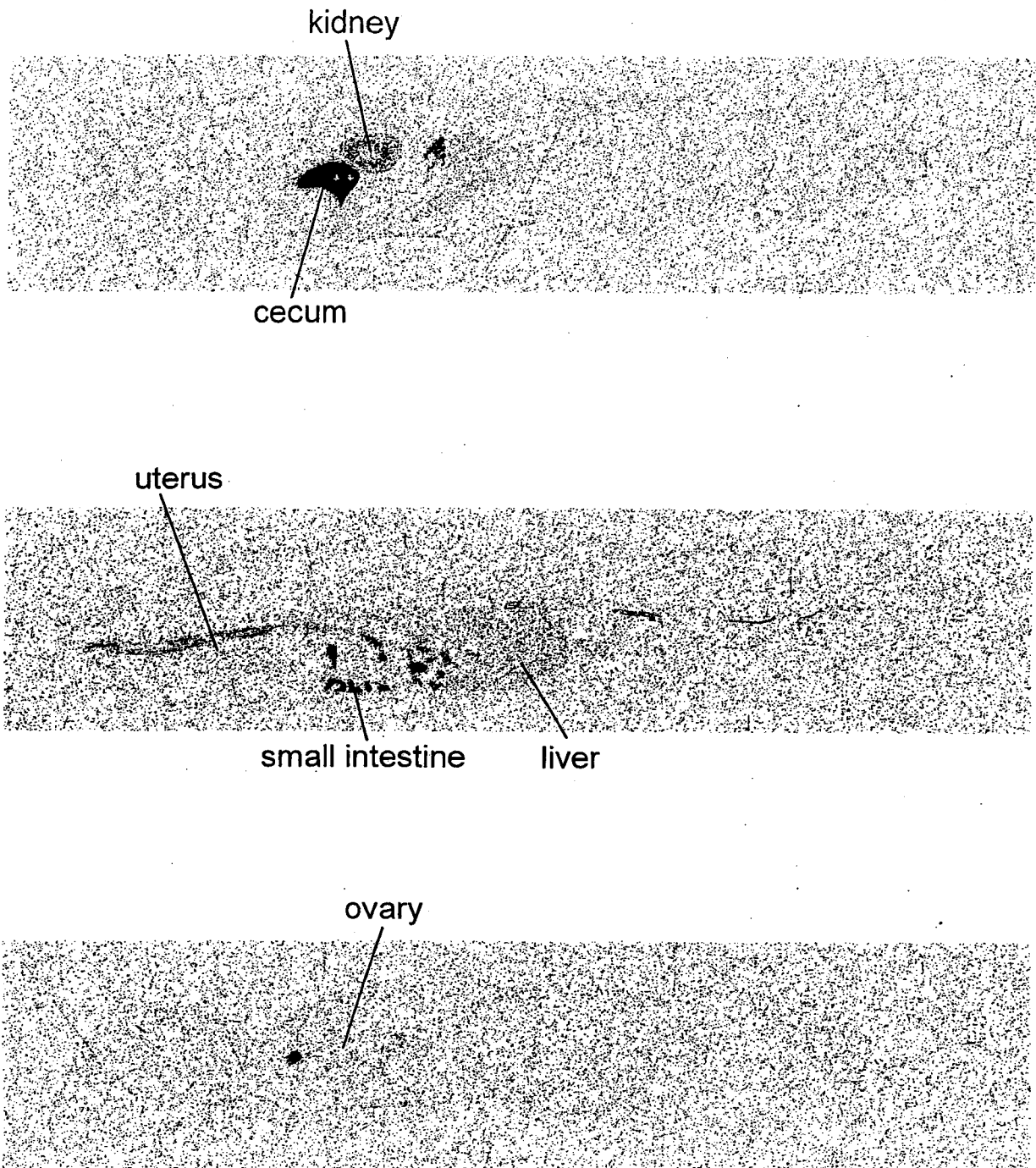


Figure 7-c. Whole body autoradiographs of a rat on the 12th day of gestation 24 hr after oral administration of Benzyl n-butyl phthalate [ring- $^{14}\text{C}(\text{U})$] (Dose : 1.85MBq/250 $\mu\text{g}/\text{kg}$)